

# Running the NPR-Dect

The NPR-DECT is the “Dynamic Emotion Categorization Test” designed at the University Medical Center Freiburg, Germany, which the goal to study how **stylized** facial expressions (abstracted using Non-Photorealistic Rendering methods like pencil drawing or watercolors) affect or influence the perception of emotions in children and adolescents with High-Functioning Autism.

1. Run "**NPR-DECT**" from the Start panel. It will open the Frapper scene with the SARA DECT test using the stylized facial expressions.

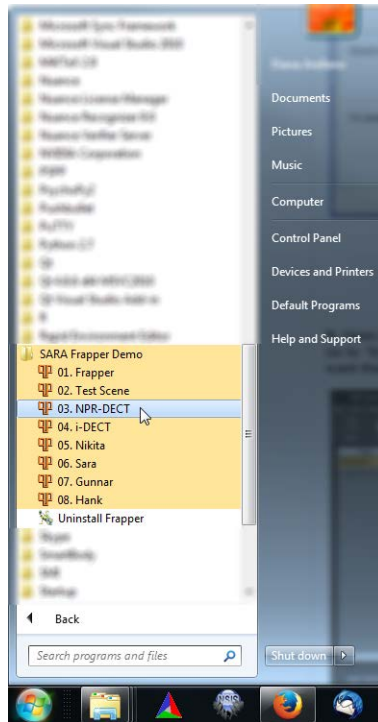


Figure 1. Scenes from the START menu.

2. Once the scene is open, drag the window corresponding to **Network Editor** so the timeline **Timeline** bar is visible.

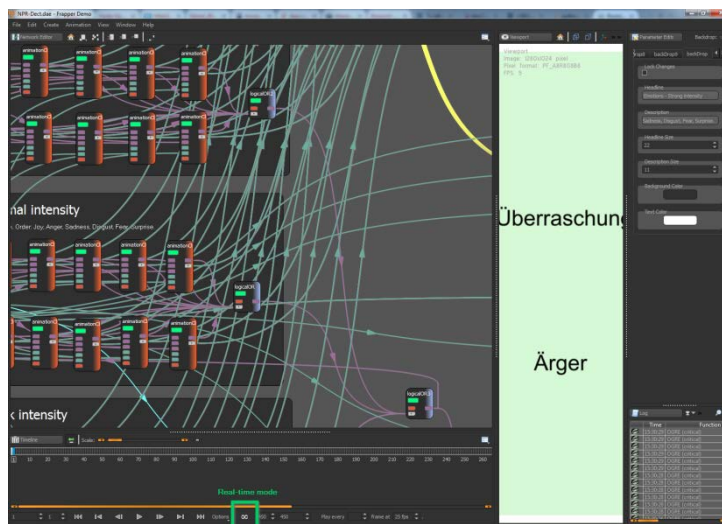


Figure 2. 'Real-time' button in the Timeline.

Press the “Real time” button at the lower part of the Frapper scene. The same can be done with the key 'R' (Figure 3). When the Realtime mode is activated it will look like “>>” (Figure 4):

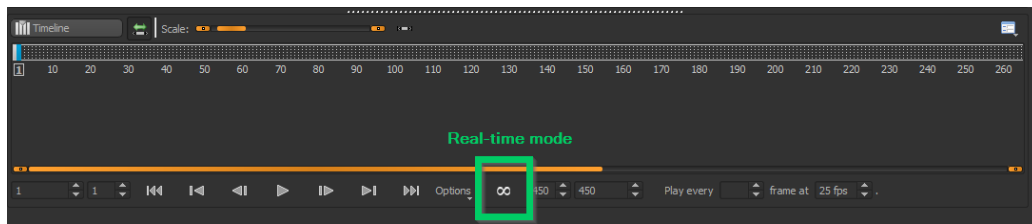


Figure 3. Real-time button

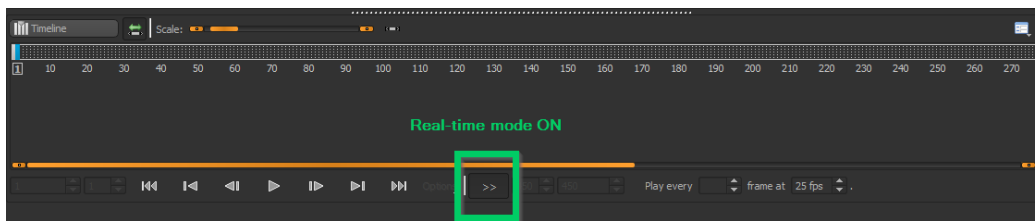


Figure 4. Real-time mode ON.

3. ‘Tear off’ the viewport, so you have the window where the character is displayed independent of the rest of the interface.

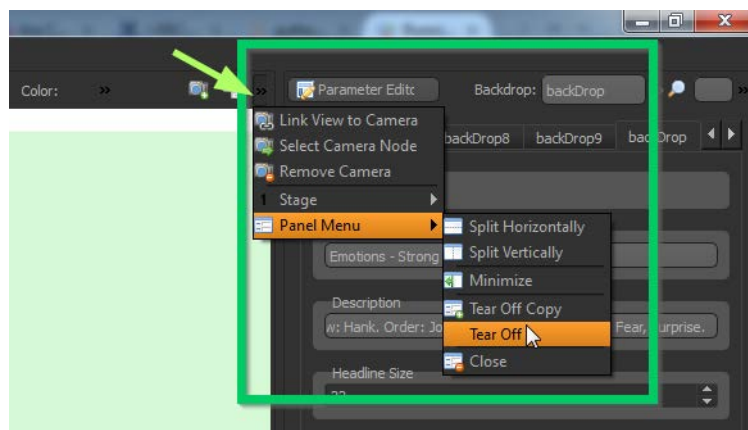
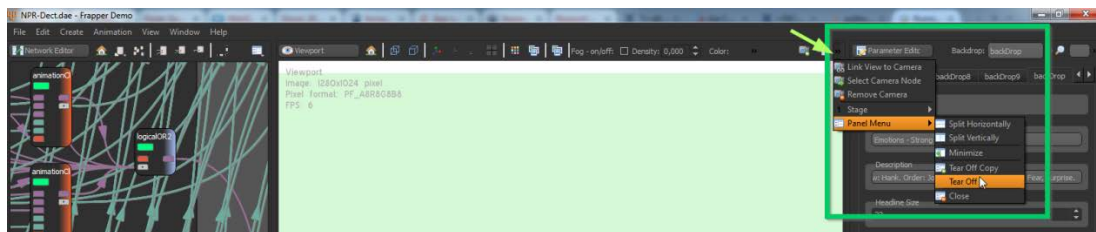


Figure 5. Tear-Off control.

4. To show the teared window in full-screen mode, press the key ‘F’ with the cursor over the window. To exit full-screen mode just press ‘F’ again.

5. Run “**PsychoPy**” software. It should open the PsychoPy Coder.

6. Open the script with the experiment. For testing, we provide the file named *'Sockets-DECT.py'*, located in the folder **PsychoPy**.

To run the experiment, press the 'Run' Key (the green running man).



7. If the communication between PsychoPy and Frapper is successful, the screen with the “emotional words” will be changed to a pink one with the message “Weiter mit ENTER” (Continue with ENTER). This indicates that the test i-DECT is ready to be initiated.

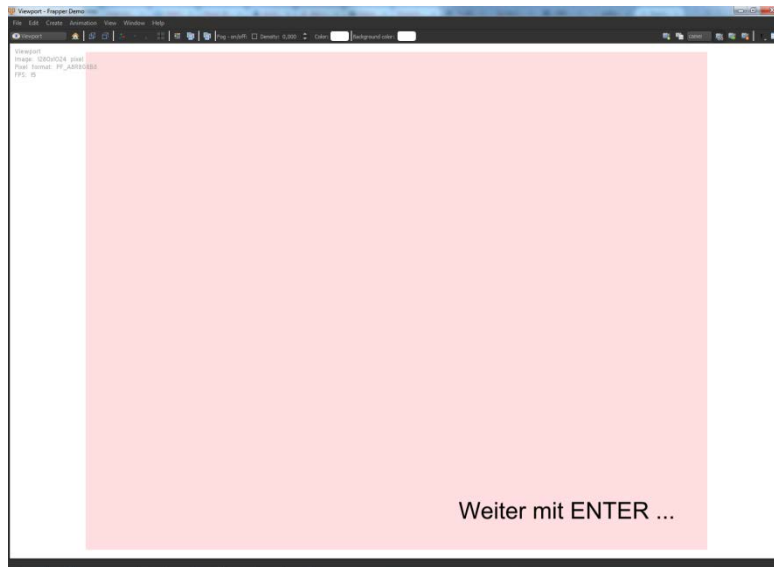


Figure 6. The i-DECT is ready to be started.

# Running the i-Dect

The i-DECT is an interactive version of the “Dynamic Emotion Categorization Test” in which the characters move sideways their eye gaze or head, with the goal to study how a deviated eye gaze in the virtual characters affects or influences eye contact in children and adolescents with High-Functioning Autism.

To run the i-DECT, select "**i-DECT**" from the Start panel. It will open the scene with the corresponding experiment.

Run also "**PsychoPy**" software and load the script named '*Sockets-iDECT.py*', located in the folder **PsychoPy**.